

CAMILLUS POCKET KNIVES

GENERAL INFORMATION

"Why Camillus Has the Edge"

Blades—Made of custom-made steel to best fit the peculiar requirements of pocket knife blades—sharpness, toughness and durability. Edges hand honed under oil with extreme care to provide the keenest cutting edge possible. Construction—Precision made to perfect fit and operation. Solid handles of best and most attractive bone stag or plastic. Nickel silver trim (bolsters, tips and shields where specified) and solid brass linings (where specified). Appearance—High polish, selected handles, attractive design supplying customer attraction and salability. Packaging—Each knife wrapped in cellophane for more eye appeal, less handling. New Smart Boxes—Number on the bottom section so knives cannot be mixed—with many other sales making, simpler handling features. Sales Promotion—The line is supported by sales card streamers, display cases, etc., to keep it moving over the retail counters. Manufacturer—Camillus Company is one of the oldest and largest in the country—over 70 years of pocket knife experience—one of the country's modern pocket knife factories.

PRUNING AND UTILITY KNIFE



Handle—Rosewood, with hole for cord. Blade—Standard pruner. Bolster—Steel. Length closed—4 in.

No. 1 Each \$2.00
Six in a Box

FISHERMEN'S KNIFE



Maize pyroxylin handle, long clip blade with scaler and caplifter. Brass lining with lock to keep blade from closing when in use. Nickel silver bolster with disgorger. Length closed 5 in.

No. 5 Each \$2.25
Six in a Box

BARLOW PATTERN KNIFE



Brown bone handle. Spear and pen blades. Brass linings. Steel bolster. Length closed 3 3/4 in.

No. 50 Each \$1.50
Six in a Box



Brown bone handle. Clip and pen blades. Brass linings. Steel bolster. Length closed 3 3/4 in.

No. 51 Each \$1.50
Six in a Box

SERPENTINE JACK KNIFE



Staged handle. Clip and pen blades. Brass linings. Nickel silver bolsters. Length closed 3 3/4 in.

No. 14 Each \$1.75
Six in a Box

HEAVY EQUAL END JACK KNIFE



Staged handle. Clip and pen blades. Brass linings. Nickel silver bolsters. Length closed 3 3/4 in.

No. 16 Each \$2.00
Six in a Box

LARGE SERPENTINE JACK KNIFE



Bone stag handle. Clip and pen blades. Brass linings. Nickel silver bolsters. Length closed 3 3/4 in.

No. 18 Each \$2.00
Six in a Box

MUSKRAT SKINNING KNIFE



Bone stag handle. Two skinning clip blades. Brass linings. Nickel silver bolsters. Length closed 3 1/4 in.

No. 20 Each \$2.00
Six in a Box

SMALL JACK KNIFE



Stagged handle. Sabre clip and pen blades. Brass linings. Nickel silver bolsters. Length closed 2-13/16 in.

No. 21 Each \$1.75
Six in a Box

SMALL JACK KNIFE



Matze pyroxylin handle. Sabre clip and pen blades. Brass linings. Nickel silver bolsters. Length closed 2-13/16 in.

No. 22 Each \$1.75
Six in a Box

CAMILLUS POCKET KNIVES
LARGE EQUAL END JACK KNIFE



Grain white pyroxylin handle. Large spear and pen blades. Brass linings. Nickel silver bolsters. Length closed 4-3/16 in.

No. 23 Each \$3.25
Six in a Box

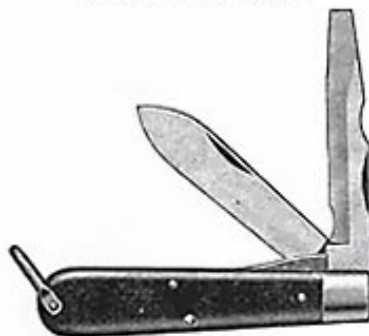
SMALL JACK KNIFE



Nu-pearl handle. Clip and pen blades. Brass linings. Nickel silver cap and bolster. Length closed 3 in.

No. 24 Each \$2.00
Six in a Box

ELECTRICIAN'S KNIFE



Super-tough black plastic handle. Spear cutting blade and long screw driver with wire scraper, and skiver for scraping and lock back that prevents blade from closing when in use. Brass linings and shackle riveted to handle. Length closed 3 1/4 in.

No. 229 Each \$1.50
Six in a Box

CONGRESS PEN KNIFE



Stagged handle. Sheepfoot and pen blades. Brass linings. Nickel silver bolsters. Length closed 3 1/4 in.

No. 40 Each \$1.75
Six in a Box

SENATOR PEN KNIFE



Stagged handle. Sheepfoot and pen blades. Brass linings. Nickel silver bolsters. Length closed 3 1/4 in.

No. 41 Each \$1.75
Six in a Box

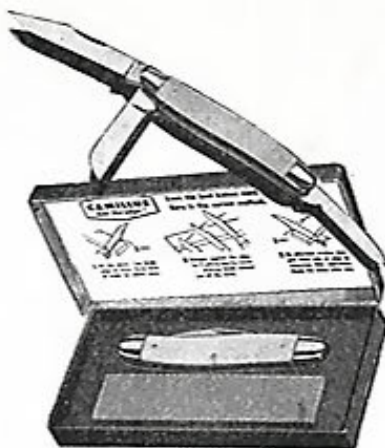
SENATOR PEN KNIFE



Nu-pearl handle. Spear and pen blades. Brass linings. Nickel silver tips. Length closed 3 1/4 in.

No. 42 Each \$1.50
Six in a Box

CAMILLUS POCKET KNIVES
JUNIOR PREMIUM STOCK KNIFE



Matze pyroxylin handle. Clip, sheepfoot and pen blades. Brass linings. Nickel silver bolsters. Length closed 3 1/4 in. One in a box with sharpening stone.

No. 63 Each \$2.50
Six in a Box

JUNIOR PREMIUM STOCK KNIFE



Brown horn pyroxylin handle. Clip, sheepfoot and spey blades. Brass linings. Nickel silver bolsters. Length closed 3 1/4 in.

No. 65 Each \$2.50
Six in a Box

SLIM SENATOR PEN KNIFE



Nu-pearl handle. Spear and file blades. Brass linings. Nickel silver tips. Nickel silver shackle. Length closed 2 1/4 in.

No. 43 Each \$1.75
Six in a Box

JUNIOR PREMIUM STOCK KNIFE



Stagged handle. Clip, spey and spiral punch blades. Brass linings. Nickel silver bolsters. Length closed 3 1/4 in.

No. 64 Each \$2.25
Six in a Box

PREMIUM STOCK KNIFE



Grain white pyroxylin handle. Clip, sheepfoot and spey blades. Brass linings. Nickel silver bolsters. Length closed 3 1/4 in.

No. 66 Each \$2.75
Six in a Box

PREMIUM STOCK KNIFE



Stag handle. Clip, sheepfoot and spey blades. Brass linings. Nickel silver bolsters. Length closed 3½ in.

No. 67 Each \$2.50
Six in a Box

DELUXE PREMIUM STOCK KNIFE



Bone stag handle. Turkish clip, sheepfoot and spey blades. Nickel silver-milled linings. Nickel silver bolsters. Length closed 4 in.

No. 69 Each \$4.00
Six in a Box

**CAMILLUS POCKET KNIVES
CARPENTER'S AND WHITTLES KNIFE**



Stag handle. Sabre clip, pen clip and coping blades. Brass linings. Nickel silver bolsters. Length closed 3½ in.

No. 72 Each \$2.50
Six in a Box

JUNIOR CATTLE KNIFE



Plastag handle. Clip, pen and sheepfoot blades. Brass linings. Nickel silver bolsters. Length closed 3¼ in.

No. 75 Each \$2.25
Six in a Box

BABY PREMIUM STOCK KNIFE



Plastag handle. Clip, spey and pen blades. Brass linings. Nickel silver bolsters. Length closed 3 in.

No. 76 Each \$2.25
Six in a Box

SMALL STOCK KNIFE



Stag handle. Clip, sheepfoot and pen blades. Brass linings. Nickel silver bolsters. Length closed 2¾ in.

No. 77 Each \$2.00
Six in a Box

**CAMILLUS POCKET KNIVES
CONGRESS KNIFE**



Bone stag handle. Two sheepfoot and two pen blades. Brass linings. Nickel silver bolsters. Length closed 3-7/16 in.

No. 91 Each \$2.50
Six in a Box

CAMP KNIFE



Staged handle. Spear, can opener, punch, screw driver and cap lifter blades. Brass linings. Nickel silver bolsters. Length closed 3 3/4 in.

No. 99 Each \$2.25
Six in a Box

**CAMILLUS POCKET KNIVES
OFFICE KNIFE**



Grain white pyroxylin handle. Spear and spey blades. Brass linings. Length closed 3-5/16 in.

No. 295 Each \$2.00
Six in a Box

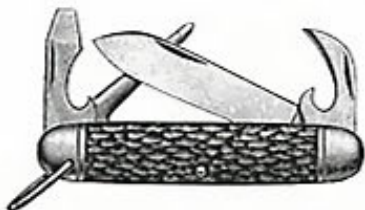
TIMBER SCRIBE OR RACE KNIFE



One blade, cocobolo handle, steel lined, 3 3/4 in.

No. 101 Each \$2.25
Six in a Box

CAMCO SCOUT OR CAMP KNIVES



Four blades, spear, can opener, punch and cap lifter and screw driver combination. Brass linings, solid steel polished bolsters and unbreakable plastic stag handles. Length closed 3 3/4 in.

No. 495 Each \$1.25
Six in a Box

BOKER POCKET KNIVES

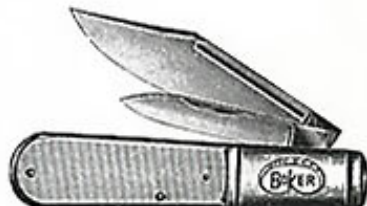
TREE BRAND
Famous for quality, workmanship and finish. Made by most skilled and experienced cutlers that take pride in precision, assembling, and ease of operation. Blades forged from special cutlery steel, hardened and tempered, that takes and holds a keen cutting edge. Each knife guaranteed against imperfections.

BARLOW PATTERN



Genuine bone stag handle, spear and pen blades, brass linings and highly polished steel bolsters. Length closed 3-5/16 in.

No. 492 Each \$1.50
Six in a Box



Genuine bone stag handle, clip and pen blades, brass linings and highly polished steel bolsters. Length closed 3-5/16 in.

No. 493 Each \$1.50
Six in a Box

SMALL JACK KNIFE



Genuine bone stag handle, spear and pen blades, brass linings, nickel silver bolsters. Length closed 2 1/4 in.

No. 9903 Each \$1.75
Six in a Box

SENATOR PEN KNIFE



Genuine bone stag handle, spear and pen blades, nickel silver milled linings, tips and shield. Length closed 3 1/4 in.

No. 1064 Each \$2.00
Six in a Box

SMALL PREMIUM STOCK KNIFE



Genuine bone stag handle, clip, pen and spey blades. Brass linings, nickel silver bolsters and shield. Length closed 2 3/4 in.

No. 8388 Each \$2.75
Six in a Box

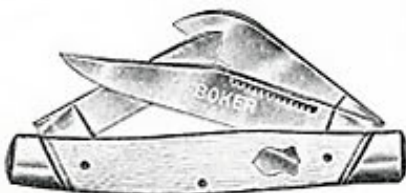
CARPENTERS KNIFE



Genuine bone stag handle, heavy duty saber clip master blade, standard pen and special cut-off pen or scribing blade. Brass linings, nickel silver bolsters and shield. Length closed 3 1/2 in.

No. 8313 Each 2.75
Six in a Box

LARGE PREMIUM STOCK KNIFE



Pearl ivory pyrolin handle, hand honed master clip, pen and spey blades. Nickel silver milled lining and nickel silver bolsters and shield. Length closed 4 in.

No. 9885-I Each \$3.00
Six in a Box

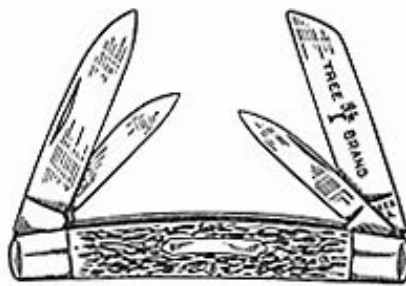
LARGE PREMIUM STOCK KNIFE



Genuine bone stag handle, hand honed master clip, pen and spey blades, nickel silver milled lining and nickel silver bolsters and shield. Length closed 4 in.

No. 8573 Each \$3.00
Six in a Box

**BOKER POCKET KNIVES
TREE BRAND
LARGE CONGRESS KNIFE**



Genuine bone stag handle, hand honed, spey and two pen blades. Brass linings, nickel silver bolsters and shield. Length closed 3-11/16 in.

No. 6007 Each \$3.00
Six in a Box

TREE BRAND



Genuine bone stag handle, spear, spey and two pen blades. Brass linings, nickel silver bolsters and shield. Length closed 4 1/4 in.

No. 5974 Each \$3.25
Six in a Box

PREMIUM STOCK KNIFE

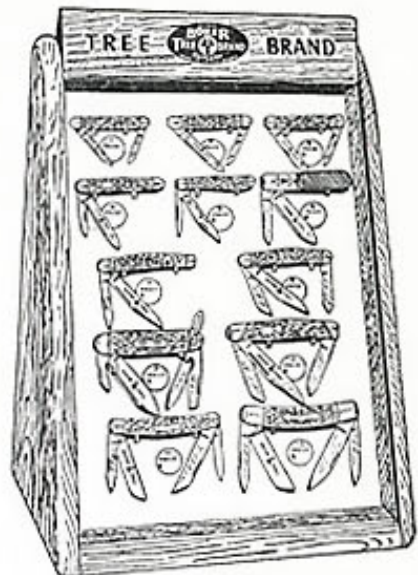


Made in Solingen, Germany

Hand forged blades from bar steel, hand ground and hand honed. Genuine bone stag handle. Clip master blade with frosted etching and sheep foot and spey. Nickel silver linings and bolsters. Tree insignia on shield. Length closed 4 in.

No. 7474 Each \$4.00
Six in a Box

BOKER POCKET KNIFE DISPLAY CASE



Handsome blond birch polished finish with slanting glass front. Will display twelve patterns on panel and has compartment in rear for stock. Height 16 1/4 in., width 12 in., depth 8 3/4 in.

No. 1236 Each Free
Free with 6 Dozen Assorted Patterns,
One in a Shipping Container

CAMILLUS DISPLAY CASE DEAL



This attractive counter display is made of bleached oak wood with glass front and with rear compartment for stock which has lock and key. Is 10 in. high, 15 1/2 in. wide, and 9 in. deep. Twelve knives wired on display panel and twenty-four in rear compartment. This assortment consists of three each of the following popular patterns:

No. 14..... Each 1.75	No. 40..... Each 1.75
No. 16..... Each 2.00	No. 41..... Each 1.75
No. 18..... Each 2.00	No. 42..... Each 1.50
No. 21..... Each 1.75	No. 51..... Each 1.50
No. 22..... Each 1.75	No. 64..... Each 2.25
No. 24..... Each 2.00	No. 67..... Each 2.50

Display case Free
Total retail for 36 knives \$67.50

No. 52-12—Deal Each \$67.50
One in a Shipping Container

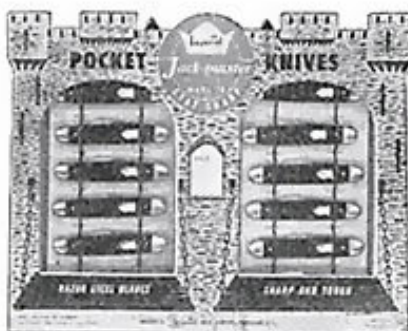
POCKET KNIVES
CAMCO—BARLOW



Extra keen cutting blades of special high carbon steel, hardened and tempered and hand sharpened. Polished steel bolsters and linings. Two blades, large clip and pen. Solid black unbreakable plastic handles. Length closed 3 $\frac{1}{2}$ in.

No. 653.....Per card (12) \$11.40
Twelve on a Display Card

POCKET KNIVES
JACKMASTER



Two blade pen knives in straight pattern, 3 $\frac{1}{4}$ in. The blading is master spear and pen of high carbon tempered steel, mirror finish. Full type bolsters, brass linings and assorted colored and imitation pearl handles with shields.

No. 300.....Per assortment (12) \$7.80
Twelve on a Display Card

POCKET KNIVES
JACKMASTER



2 $\frac{3}{4}$ in. two blade serpentine pattern with full bolsters. Master clip and pen blades of tempered high carbon steel, mirror finish and brass linings. Simulated stag handles with shields.

No. 785.....Per card (12) \$7.80
Twelve on a Display Card

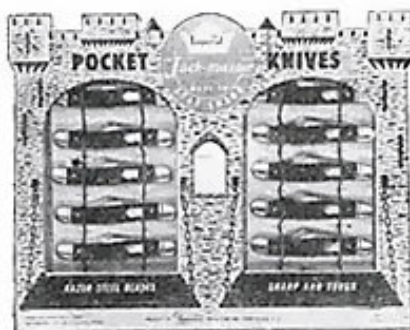
JACKMASTER



An assortment of medium size two blade jack patterns, 2 $\frac{3}{4}$ in. to 3 $\frac{1}{4}$ in. Master clip and pen blades of high carbon tempered steel, mirror finish. Full nickel type bolsters, brass linings and stag handles with shields.

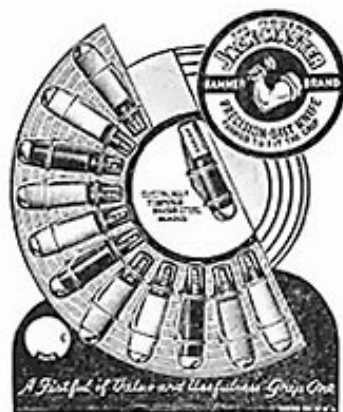
No. 84.....Per assortment (12) \$7.80
Twelve on a Display Card

JACKMASTER



3 $\frac{1}{4}$ in. two blade serpentine pattern jack knives with full bolsters. Master clip and pen blades of tempered high carbon steel, mirror finish and brass linings. Assorted handles in simulated stag, imitation pearl and colored with shields.

No. 685.....Per assortment (12) \$7.80
Twelve on a Display Card



3 $\frac{3}{4}$ in. Barlow pattern with assorted black, white and red handles. Master clip and pen blades of tempered high carbon steel, mirror finish and brass linings.

No. 266.....Per assortment (12) \$7.80
Twelve on a Display Card